

Think Before You Click

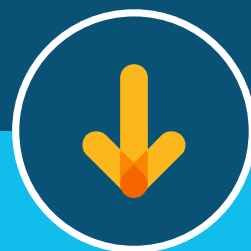


30% of phishing emails are opened

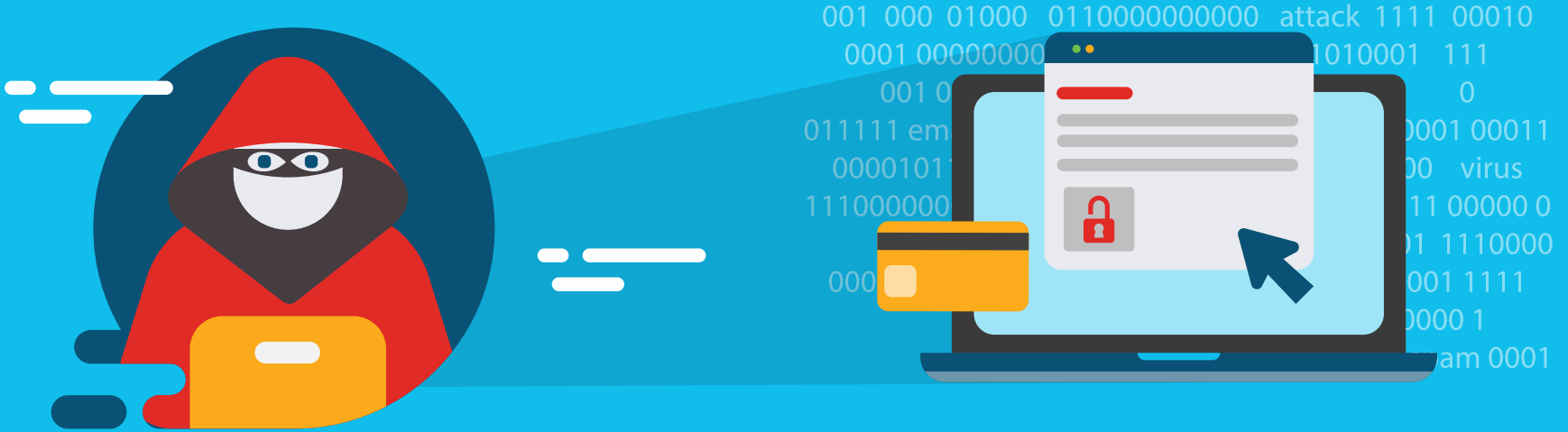
12% of targets click the link or attachment



63% of confirmed data breaches use a weak, default or stolen password



Security begins with you



It only takes **one click** for sensitive data to fall into the wrong hands



Cisco phishing program

Addresses the #1 source of endpoint compromise

- Centralized “phishpond” site, offers support resources
- Quarterly phishing campaigns test and retest users
- Spear phishing campaigns for high-risk users
- Gradual complexity, starts with ‘easy phish’
- Immediate education with each click
- How to safely send mass emails
- User awareness is the first step

Phishing tips

Protect you and your family

- Avoid strangers, check name and email address
- Don’t rush, be suspicious of emails marked “urgent”
- Notice mistakes in spelling and grammar
- Beware of generic greetings, “dear sir/ma’am”
- Don’t be lured by incredible “deals”
- Guard sensitive data, ids and financial information
- Double check links and attachments